



MASSACHUSETTS ACADEMY OF DERMATOLOGY

167 Washington Street.

Norwell, MA 02061

Telephone : 781-982-8899

FAX: 781-878-0838

Web: www.massacademyofdermatology.org

Dear Doctor:

You are cordially invited to attend the Annual Meeting of the Massachusetts Academy of Dermatology which will be held on Sept. 11-13th at The Marriott Hotel in Newport RI. This luxurious waterfront hotel with its spectacular view of the harbor and within walking distance of restaurants and shops provided a wonderful venue for our meeting three years ago.

Our meeting is jointly sponsored by ProMutual Group and the Massachusetts Academy of Dermatology. This activity has been planned and implemented in accordance with the Essential Areas and policies of the Accreditation Council for Continuing Medical Education through the joint sponsorship of ProMutual Group and the Massachusetts Academy of Dermatology. ProMutual Group is accredited by the ACCME to provide continuing medical education for physicians

Following tradition, the weekend program includes clinical presentations, social events, and opportunities for golf, shopping and sightseeing in the region. A distinguished group of speakers will provide a diversified speaking program on topics we see in our daily practices. We will hold cocktail receptions on Friday and Saturday evenings. A golf tournament at a nearby Newport National Country Club will be held on Saturday afternoon.

We have reserved a block of rooms at The Newport Marriott for the meeting at a rate of \$305 plus taxes (per night, single or double occupancy). These rooms are available on a first come first serve basis. The deadline for reserving one of these rooms is August 14th. Room reservations should be made directly with the hotel by calling the toll free reservation desk at 800-228-9290 and identify yourself as belonging to the Massachusetts Academy of Dermatology.

For those who prefer other accommodations there are many hotels and bed and breakfast inns in the area. A good website for Newport lodging, dining and tourist information is: <http://www.gonewport.com/>.

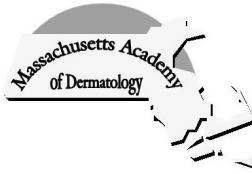
In recent years our Annual Meeting has enjoyed an outstanding reputation for providing a high quality educational program, in beautiful settings. This is our major initiative and provides an opportunity for us to get together with colleagues for a weekend combining clinical education, business, and socializing. Newport promises to be an ideal setting for another outstanding meeting.

I look forward to seeing you there.

Yours truly,

Kathryn E, Bowers M.D.

President



Massachusetts Academy of Dermatology
2009 Annual Meeting
Newport, RI

Friday B September 11

Noon B 1:00 pm Registration
1:00 pm B 5:30 pm Program Series I
6:00 pm B 7:00 pm Reception

Saturday B September 12

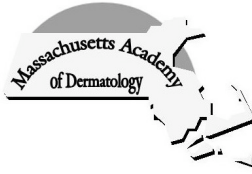
7:30 am B 9:30 AM Breakfast B Open to all attendees and families
8:00 am B 12:15 PM Program Series II
12:30 pm Golf Tournament –
6:00 pm B 7:00 PM Reception

Sunday B September 13

7:00 am B 9:30 AM Breakfast B Open to all attendees and families
7:00 am B 8:30 AM Breakfast/Business Meeting
8:30 am B 12:30 PM Program Series III

Confirmed Speakers / Topics (times to be determined)

Marie France Demierre MD Boston, MA	Case Histories
Todd Ellerin MD Boston, MA	Update on MRSA in 2009 Antibiotics for Infectious Diseases
Peter Heald MD New Haven CT	Medical Dermatology Hotline
Michael Kaminer MD Chestnut Hill, MA	Cutaneous T Cell Lymphoma (CTCL) Update Cosmetic Dermatology Update Pearls and Pitfalls of Botox and Fillers
Kathryn Schwarzenberger MD Burlington, VT	Vasculitis – When to Worry
Hensin Tsao MD Boston, MA	Melanoma Update A Primer on the Human Genome
Mina Yaar, MD Boston, MA	What Really Happens When the Skin Ages New Approaches to Hair Lightening



MASSACHUSETTS ACADEMY OF DERMATOLOGY

167 Washington Street.

Norwell, MA 02061

Telephone : 781-982-8899

FAX: 781-878-0838

Web: www.massacademyofdermatology.org

2009 Annual Meeting Registration

Name: _____

City/State/Zip _____

Tel: _____ Fax: _____

E-mail: _____

Spouse/Guest: _____

	Amount	
Members	\$ 150	_____
Nurse Practitioners/Physician Assistants	\$ 250	_____
Office managers	\$ 250	_____
Non-members:	\$ 350	_____
Vendors:	\$ 500	_____
Residents	Complimentary	
Additional Registration Fees:		
Golf	\$ 125	_____
	Total Due:	_____